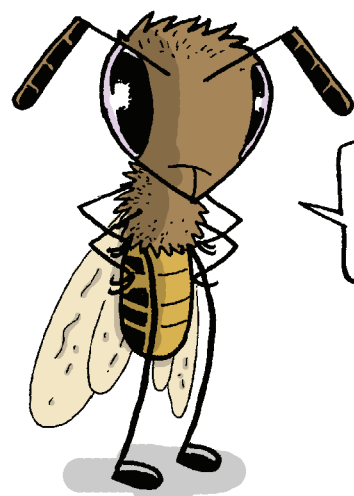


THE BO(U)LDER QUESTION "WHO CARES ABOUT A BUNCH OF DEAD BEES?"

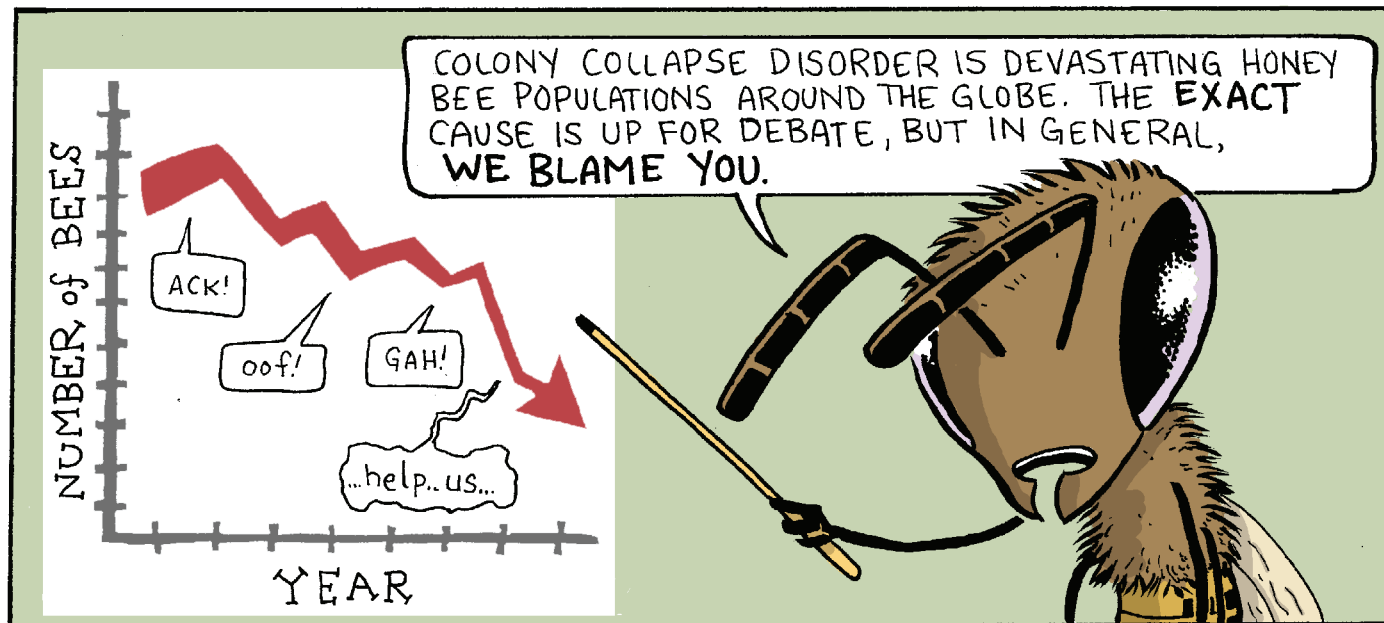
by JAY
HOSLER
'89



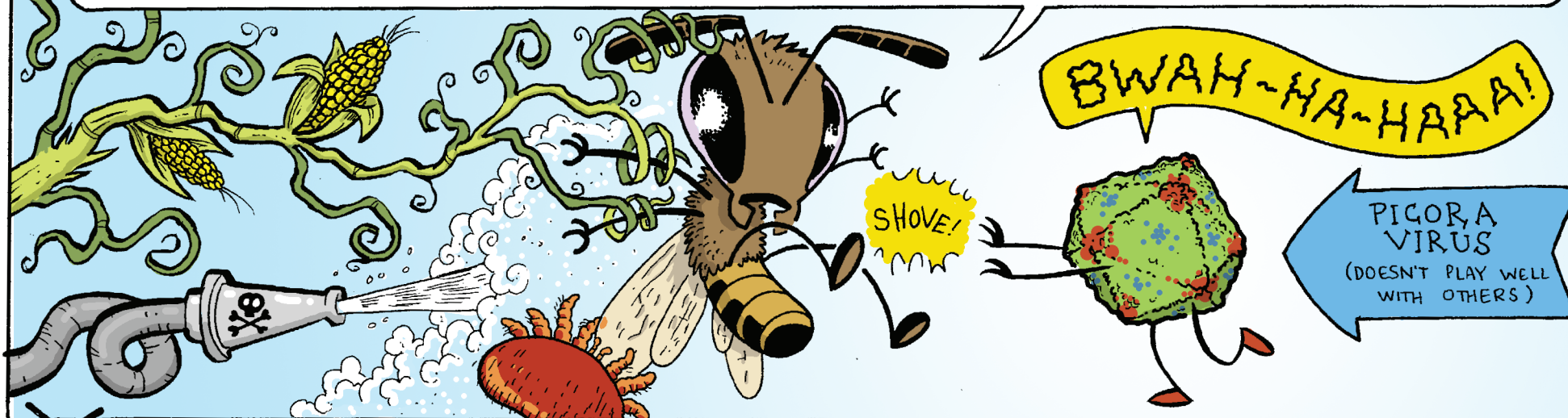
HOSLER, A BIOLOGY PROFESSOR AND CHAIR OF THE BIOLOGY DEPARTMENT AT JUNIATA COLLEGE, IS AUTHOR OF SEVERAL GRAPHIC NOVELS THAT EXPLAIN SCIENCE, INCLUDING THE AWARD-WINNING "CLAN APIS," THE BIOGRAPHY OF A HONEY BEE.



THIS IS BAD, PEOPLE.

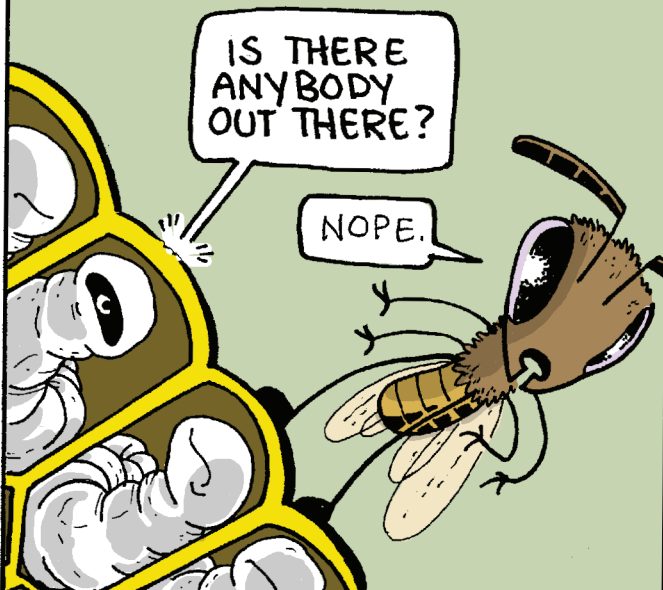


RECENT RESEARCH SUGGESTS CCD HIVES ARE INFECTED BY A PICORNA VIRUS THAT'S MESSING WITH OUR ABILITY TO FIGHT OFF OTHER DISEASES AND RESIST THE DAMAGING EFFECTS OF POOR NUTRITION FROM MONOCULTURE FARMING, HIVE PARASITES AND BUCKETS OF YOUR PESTICIDES.

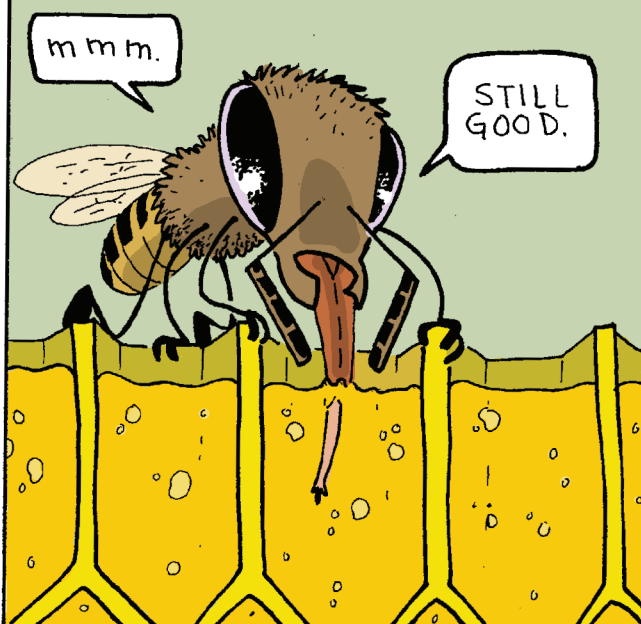


WHILE THE CAUSES OF CCD ARE COMPLICATED, CCD HIVES HAVE CLEAR-CUT SYMPTOMS.

MOST OF THE ADULT BEES ARE GONE AND THEY'VE LEFT UNHATCHED BROOD.

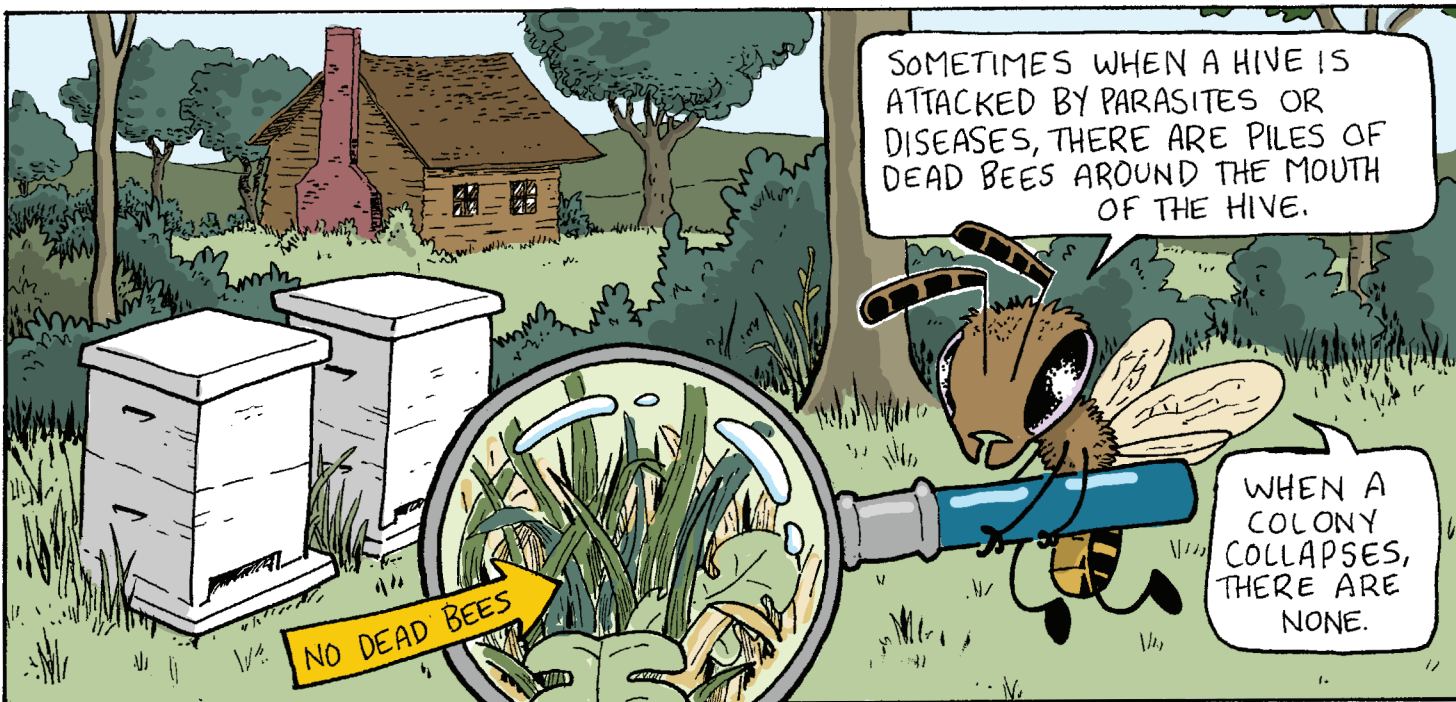


THERE'S PLENTY OF HONEY AND POLLEN.



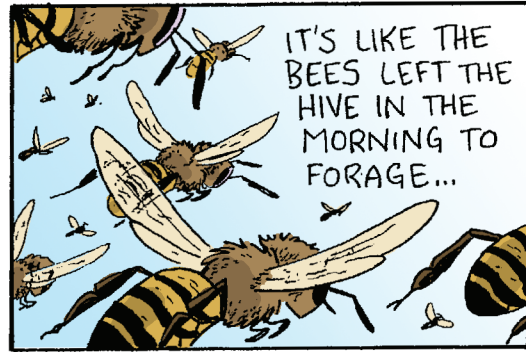
AND THE QUEEN IS STILL THERE.





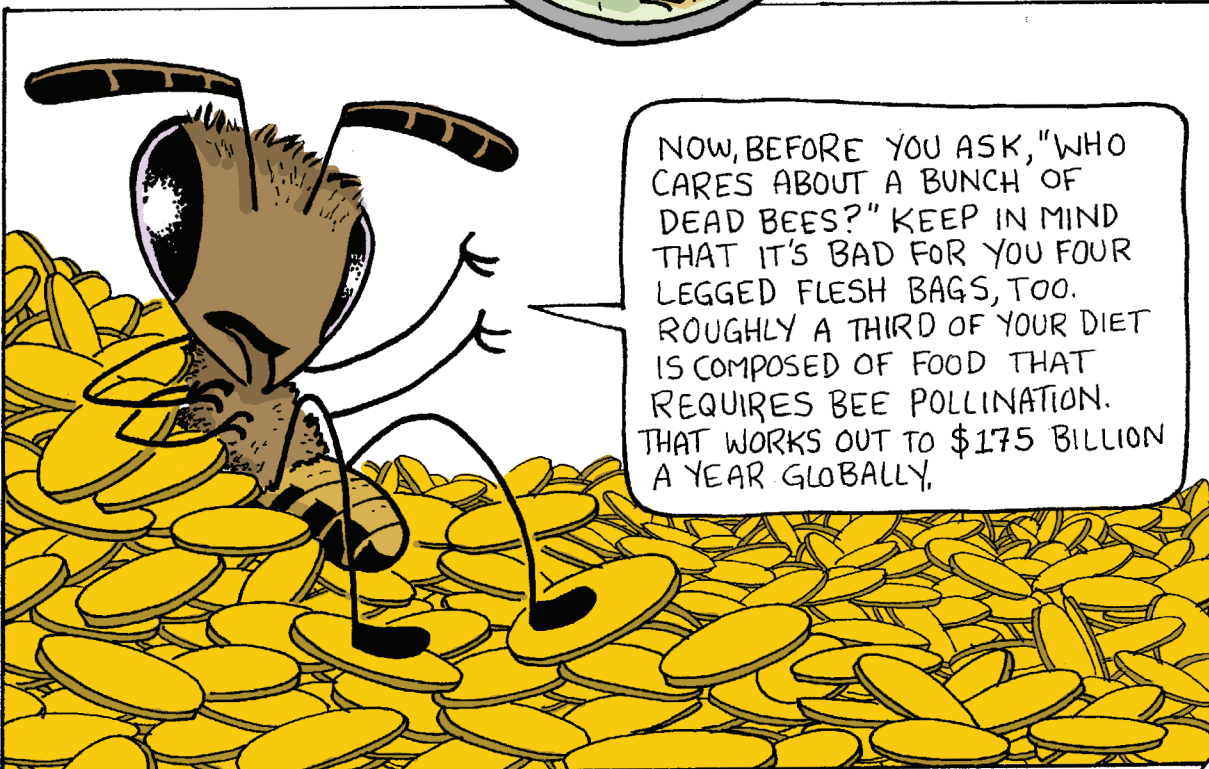
SOMETIMES WHEN A HIVE IS ATTACKED BY PARASITES OR DISEASES, THERE ARE PILES OF DEAD BEES AROUND THE MOUTH OF THE HIVE.

WHEN A COLONY COLLAPSES, THERE ARE NONE.



IT'S LIKE THE BEES LEFT THE HIVE IN THE MORNING TO FORAGE...

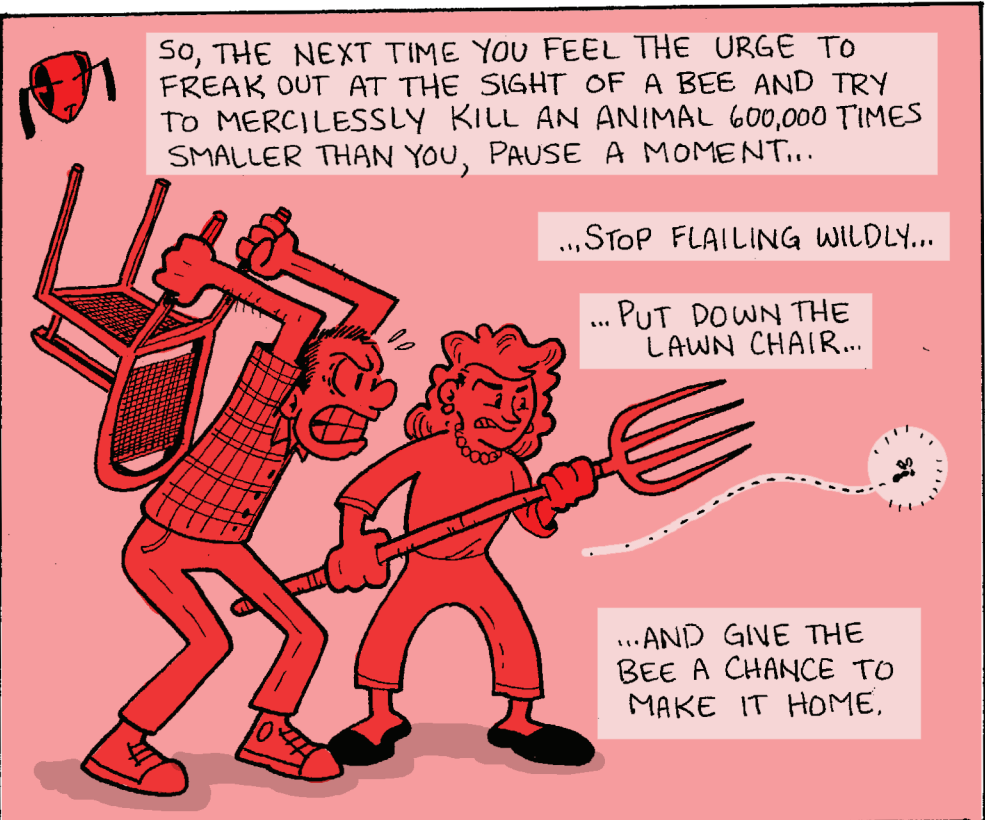
... AND JUST NEVER CAME HOME.



NOW, BEFORE YOU ASK, "WHO CARES ABOUT A BUNCH OF DEAD BEES?" KEEP IN MIND THAT IT'S BAD FOR YOU FOUR LEGGED FLESH BAGS, TOO. ROUGHLY A THIRD OF YOUR DIET IS COMPOSED OF FOOD THAT REQUIRES BEE POLLINATION. THAT WORKS OUT TO \$175 BILLION A YEAR GLOBALLY.



AND I HOPE YOU LIKE BEIGE FOOD BECAUSE, IF YOU DON'T DO SOMETHING YOU'RE GONNA LIVE IN A WORLD WITHOUT WATERMELONS, ONIONS, PLUMS OR ANY OF THESE OTHER CROPS WE POLLINATE.



SO, THE NEXT TIME YOU FEEL THE URGE TO FREAK OUT AT THE SIGHT OF A BEE AND TRY TO MERCILESSLY KILL AN ANIMAL 600,000 TIMES SMALLER THAN YOU, PAUSE A MOMENT...

...STOP FLAILING WILDLY...

...PUT DOWN THE LAWN CHAIR...

...AND GIVE THE BEE A CHANCE TO MAKE IT HOME.

ALSO, STOP USING SO MANY #!\$%& PESTICIDES.

WHAT'S WRONG WITH YOU PEOPLE?

